

**COMPANY
PROFILE**

2024

WHO WE ARE

Renov is a reliable general contractor for the infrastructure development of your business ranging from Restaurant, Cafe, Coffeshop, Retail, Central Kitchen, Food Factory, Office and Home.

We will assist you from the initial planning stage, budget and design consultation, construction, procurement of equipment and supplies, operational process consultation to regular routine maintenance.



OUR EXPERIENCE

MULTI TYPE

WE BUILD CENTRAL KITCHENS, SATELITE KITCHENS, RESTAURANT, WAREHOUSES, CAFES, RETAIL STORES, ETC

5 CITIES

JABODETABEK, BANDUNG, SEMARANG, MEDAN AND SURABAYA

50+ CLIENTS

VARIOUS CLIENTS FROM VARIOUS BACKGROUNDS

250+ PROJECT

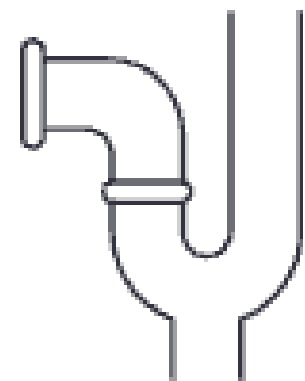
STILL GROWING...

OUR SERVICES



Building Construction

- Site Preparation
- Foundation Work
- Structural Work
- Wall / Paint Work
- Ceiling Work



Mechanical Engineering

- Electricity
- Plumbing
- Gas Pipe
- Gas Alarm System
- EA/FA System
- Maintenances



Interior / Architecture Design

- Layout 2D
- 3D Interior Design
- 3D Exterior Design
- Shop Drawing



Design/Custom Furniture

- Design Furniture
- Custom Furniture
- Shop Drawing

HOW WE WORK



**LISTEN &
BRAINSTROMING**



**BUDGET &
PROPOSAL**



**CONSTRUCTION
PROCESS**



READY TO OPEN

OUR CLIENTS

HANGRY!

ISMAYA®
CREATING THE GOOD LIFE

Legit
group

Yummy
Corp

GrabKitchen

UENA

sushi
kaiyō

accha
INDIAN SOUL FOOD

鸡煲之家
CHICKEN CLAYPOT HOUSE

BUGATEA

Yummykitchen

THE HALAL GUYS
CHICKEN | GYRO | FALAFEL

PASTARIA

SEITAN

RYUJIN

Bogana
May-May
Khas Jawa Tengah

TOKO LIQUOR

KyōChon 1991

TEL&C
TUNAS EXPRESS LOGISTIC & COURIER

FLASH
WE CARE ABOUT YOUR LOAD

Red Kitchen

Midori
JAPANESE RESTAURANT

dailybox

+
And More

PROJECT STUDY

CENTRAL KITCHEN & HEAD OFFICE

Project Renovations

- Client : BOGANA MAY MAY INDONESIA
- Scope : HQ, Central Kitchen & Warehouse
- Locations : Serpong, Tangerang
- Timeline : 120 Days

Building Description

- Building Type : ex. Pre-School
- Size : 18 x 30 x 3 Floors / 1.620m²
- 1st Floor : Central Kitchen & Warehouse
- 2nd Floor : HQ / Office
- 3rd Floor : Employee Mess & Warehouse



PROJECT STUDY

CENTRAL KITCHEN & HEAD OFFICE

1st. Floor

Capacity Production : Up to 10,000 Pax/Day

Kitchen Nett Size : 180m²

Facility

- Gas Pipe
- Gas Alarm System
- Exhaust Air System
- Air Cooler System / Fresh Air
- Electric generator System
- Water Filter
- Grease Trap Central
- Electrical Panel
- Kitchen Equipment Stainless Steel



PROJECT STUDY

CENTRAL KITCHEN & HEAD OFFICE

2nd. Floor

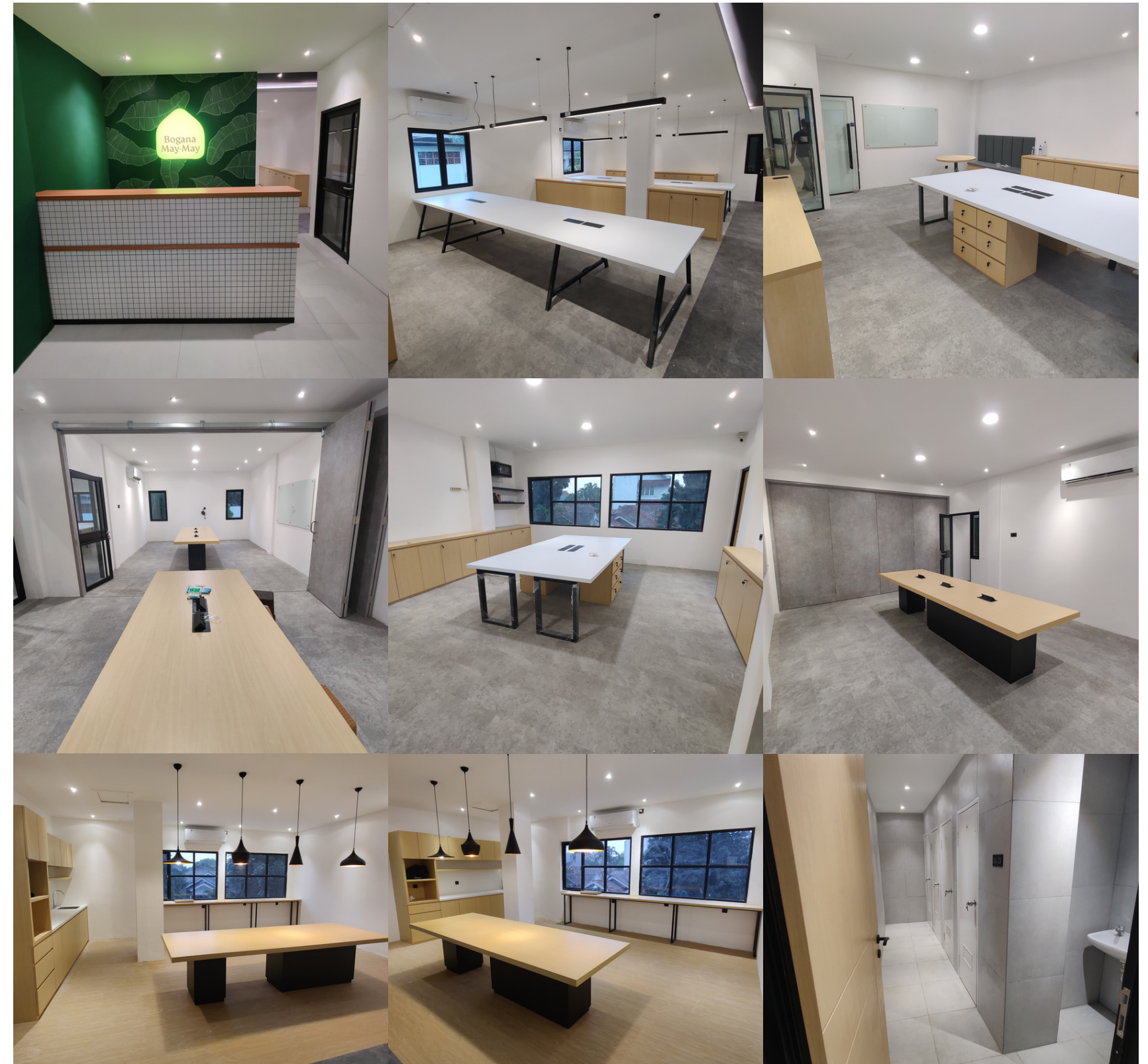
Capacity : Up to 100 Pax

Office Nett Size : 540m2

Office Concept : Minimalist

Facility

- Working Table
- 2 Small Meeting room & 2 Big Meeting Room
- General Toilet 8 Pax / Executive Toilet 2 Pax
- Receptionist
- Janitor
- Pantry



PROJECT STUDY

CENTRAL KITCHEN & HEAD OFFICE

3rd. Floor

Capacity Mess : Up to 80 Pax

Mess Nett Size : 440m²

Warehouse Nett Size : 100m²

Facility

- Dining Area Up to 16 Pax
- Rest Area / General Area
- 20 Bedroom (4 Pax)
- Bathroom 8 pax (4 Woman/4 Man)
- Laundry Room
- Pantry



PROJECT STUDY

RESTAURANT SHOPHOUSE & MALL

Project Renovations

- Client : Chicken Claypot Indonesia
- Scope : Commercial Kitchen & Interior
- Locations : Jakarta & Tangerang
- Timeline : 10 Weeks

Building Description

- Building Type : Shophouse & Mall
- Shophouse Size : Shophouse 400m²
- Mall Size : 200m²



PROJECT STUDY

RESTAURANT SHOPHOUSE & MALL

Shophouse

1st Floor - Regular Dine-in

Capacity Seat : Up to 92 Seat

Dine-in Size : 200m²

2nd Floor - VIP Dine-in

Capacity Seat : Up to 30 Seat

Dine-in Size : 100m²

3rd Floor - Back Office & Warehouse

Capacity Seat : 12 Seat

Warehouse Size : 60m²

Scope of works

- Civil Works
- Electrical / Lighting
- Fixture
- Furniture
- AC
- Exhaust



PROJECT STUDY

RESTAURANT SHOPHOUSE & MALL

Shophouse

4th. Floor

Kitchen Nett Size : 50m2

Facility

- Gas Pipe
- Gas Alarm System
- Exhaust Air System
- Air Cooler System / Fresh Air
- Water Filter
- Grease Trap Central
- Electrical Panel
- Kitchen Equipment Stainless Steel



PROJECT STUDY

RESTAURANT SHOPHOUSE & MALL

Mall / Commercial Area

Dine-in Area

Capacity Seat : Up to 60 Seat

Dine-in Size : 90m²

Scope of works

- Civil Works
- Electrical / Lighting
- Fixture
- Furniture
- AHU Ducting
- Exhaust



PROJECT STUDY

RESTAURANT SHOPHOUSE & MALL

Mall / Commercial Area

Kitchen

Kitchen Nett Size : 32m2

Facility

- Gas Pipe
- Exhaust Air System
- Air Cooler System / Fresh Air
- Water Filter
- Bak Kontrol
- Electrical Panel
- Kitchen Equipment Stainless Steel



PROJECT STUDY

RETAIL - BOOTH

Mall / Commercial Area

Dine-in Area

Type : Booth

Scope of works

- Civil Works
- Electrical / Lighting
- Fixture
- Furniture



PROJECT STUDY

RETAIL - BOOTH

Mall / Commercial Area
Dine-in Area

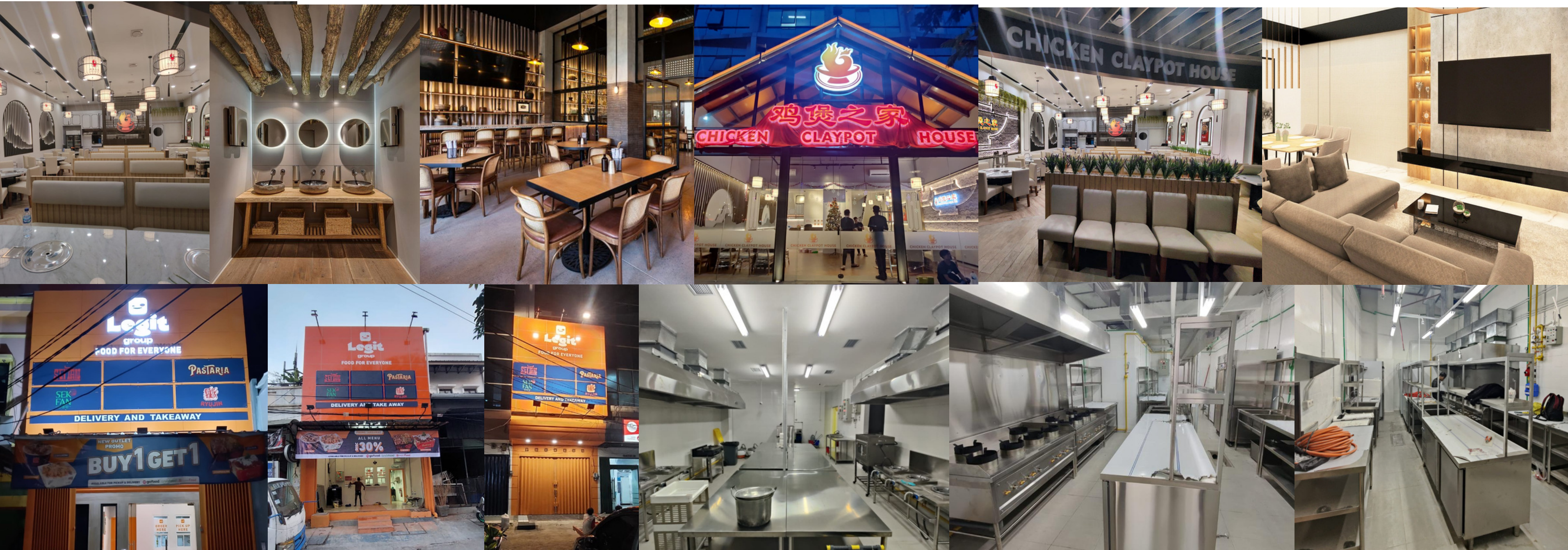
Type : Booth

Scope of works

- Civil Works
- Electrical / Lighting
- Fixture
- Furniture



OTHER PROJECTS



RENOV

THANK YOU

LET'S CONNECT WITH US!

WA : +62 819 -1929 - 3919

sales@yukrenov.com

www.renovgroup.com